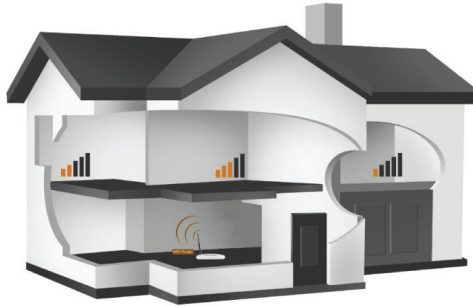
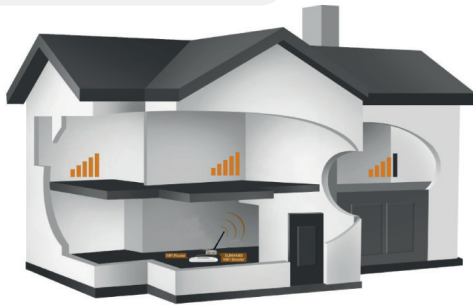


sunhans

If only have wireless router, signal coverage range is very small, the second floor will become very weak signal



When the wireless router connect to SUNHANS wireless signal amplifier, the signal coverage range is very large, on the second floor of the signal becomes very strong.



sunhans



P/N 2000WB24014

made in china



www.sunhans.com



WiFi Signal Booster

2000mW 2.4GHz
33dBm

User Manual

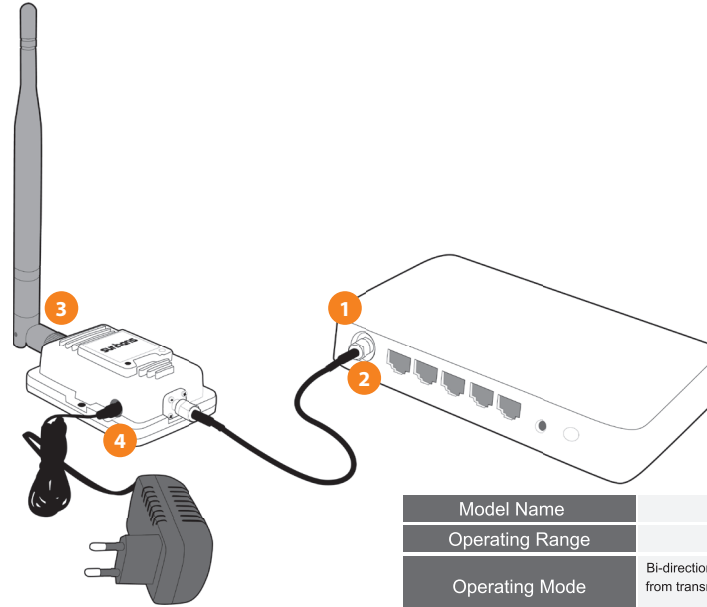


Installation Sketch Map

- 1 Remove antenna from AP Router
- 2 Connect Booster to AP Router with RG316 cable
- 3 Connect the antenna to the other end of booster
- 4 Plug in the power adapter

Package Contents:

- .1 X signal booster
- .1 X power adapter
- .1 X 20cm RG316 cable
- .1 X 6dBi antenna
- .1 x English user manual



sunhans

WiFi Signal Booster

2000mW 2.4GHz 33dBm

Features & Description

Sunhans's family of Wi-Fi Signal Booster is designed for use in mobile and/or mesh wireless networking applications. most consistent signal amplification available for Wi-Fi networks. Designed for bi-directional signal amplification, In contrast, traditional analog amplifier technologies can go into saturation or reduce transmit power as input signal fluctuates, negatively impacting signal quality and network performance. While allowing for the use of virtually any 2.4GHz antenna that implements an SMA-Male connector. while the small footprint and low profile design makes it an ideal solution for mounting on vehicles or in other space constrained applications.

The Sunhans's 2.4GHz Inline Signal Booster efficiently increases signal reach of any antenna by up to 200%-400% while maintaining high data throughput rates. This signal boosting functional- ity adds up to 16dB of transmit gain and 12dB of receive gain, resulting in a farther reaching signal and better connectivity with client radios.results may vary depending on environmental factors, interference, cable length and type, etc.

Model Name	SH-2000
Operating Range	2400~2500 MHz
Operating Mode	Bi-directional, half-duplex, time division duplex senses RF, carrier from transmitter and automatically switch receiving to transmitting mode
Connector Type	SMA Receptacle (50 ohm)
Input Power	0 ~ 20 dBm
Transmit Gain	13 - 16dB
Output Power	2000 mW (33 dBm)
Receiver Gain	≤ 12 dB
Noise Figure	3.5 dB typical
Frequency Response	±1dB over operating range
Power Adapter	6V/2A DC, 100~240V for AC Adapter
Operating Temperature	-20°C to + 70°C
Operating Humidity	Up to 75% relative humidity
Material	Cast Aluminum
Booster Weight	145 g
Package Weight	380g
Booster Size	9.1 x 5.6 x 2.9cm
Package Size	18.5 x 13.5 x 4.5cm