

Mini Bluetooth Keyboard

For Windows 2000/XP

User's Guide

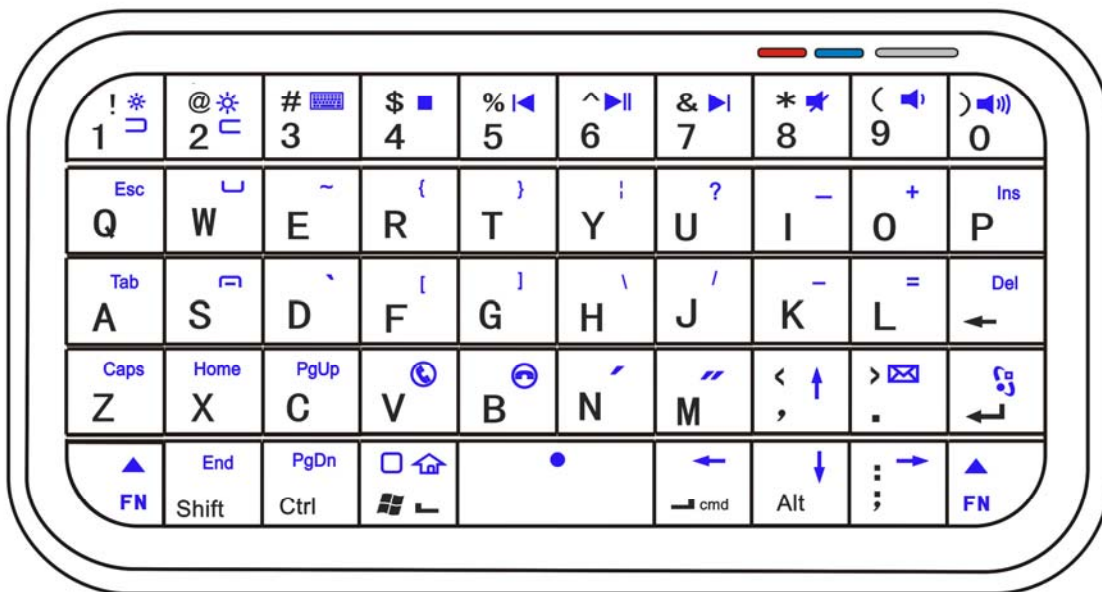


CAUTION: To use this product properly, please read the user's guide before installation

Welcome

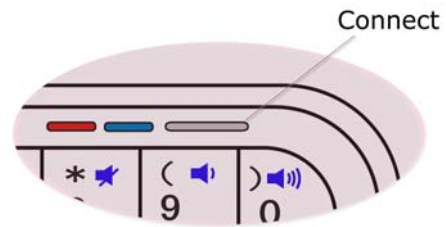
Congratulations on selecting the Mini Bluetooth Keyboard, it's super slim size with 49 keys. This creative and easy-to-use Bluetooth Keyboard will bring you the novel feeling of wireless transmitting..It is compatible with:

1. Computers with Windows/Mac/Linux OS
2. Handhelds with Android / Windows Mobile (5.0 & later) / Nokia Symbian S60 (V3.0 & later) OS
3. Sony Playstation 3
4. HTPC with built-in Bluetooth
5. Apple iPad, iPhone / Touch in (2.0 & later) OS



Blue LED Blinking: [Pairing / battery low](#)

Red LED on: [Charging](#)



Hotkeys Function Guide








Multimedia Hotkeys

No.	Shortcut Keys	Symbol	Function
1	FN + 4\$	■	Stop
2	FN + 5%	◀	PrevTrack
3	FN + 6&	▶	Play/Pause
4	FN + 7&	▶	NextTrack
5	FN + 8*	🔇	Mute
6	FN + 9(🔊	Volume -
7	FN + 0)	🔊	Volume +
8	FN + WinStart	🏠	Webhome
9	FN + >.	✉	Mail







iPad/iPhone 4.0 System

No.	Shortcut Keys	Symbol	Function
1	FN + WinStart	□	Home Screen
2	FN + 1 !	☀	Brightness -
3	FN + 2 @	☀	Brightness +
4	FN + 3 #	⌨	Virtual KeyBoard
5	cmd + Space		Switch languages
6	cmd + A		Select all items in the front Finder window
7	cmd + C		Copy selected item/text to the Clipboard
8	cmd + V		Paste
9	cmd + X		Cut

Symbian Series60 System

No.	Shortcut Keys	Symbol	Function
1	WinStart		Left Key
2	cmd		Right Key
3	FN + Space		OK Key
4	FN + Enter		Menu Key
5	FN + V		Call Key
6	FN + B		End Key
7	FN + . >		Mail

Windows Mobile System

No.	Shortcut Keys	Symbol	Function
1	FN + 1 !		Left Key
2	FN + 2 @		Right Key
3	FN + W		Call Key
4	FN + S		End Call Key,  or  Window

System Requirement

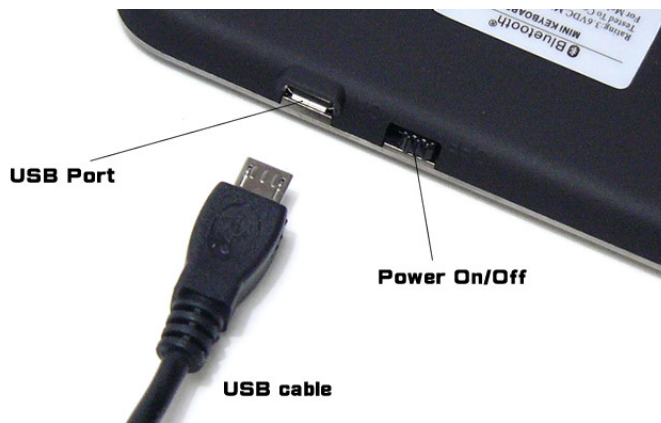
- IBM or PC Compatible/Mac PC enable with Bluetooth wireless technology.
- Windows system with Bluetooth software installed (Windows XP SP2 or above, Windows vista, Toshiba stack, Widcomm BTW, or IVT Bluecoleil).
- Mac OS 10.2.8 or above with Bluetooth software installed.

Installation Guide

Step 1. Charging the battery

When to charge

- 1 First-Time Use: Please charge at least 6 hours for the first time usage and charge at least 2 hours when battery runs low
- 2 Blue LED Blinking: When the blue LED starts blinking, it means the battery is nearly empty



How to charge

Plug the USB cable into your keyboard and computer by USB port respectively and it starts charging. Keyboard can work uninterruptedly during charging.

Step 2. Pairing your Bluetooth Keyboard with your computer

Before pairing your Bluetooth Keyboard with your computer, you should read through the instructions that came with your Bluetooth hardware and software for detail how to pair a device to your specific Bluetooth configuration. Follow below steps to pair your Bluetooth Keyboard under Widcomm BTW, Microsoft Bluetooth driver and IVT Bluecoil

- Before you can install your Bluetooth Keyboard, please make sure you have done the Bluetooth dongle installation procedure.

- Press the “connect” button on the back of the keyboard for 1-3 seconds. The keyboard will be switched to the standby mode for pairing, the red light LED will flash..

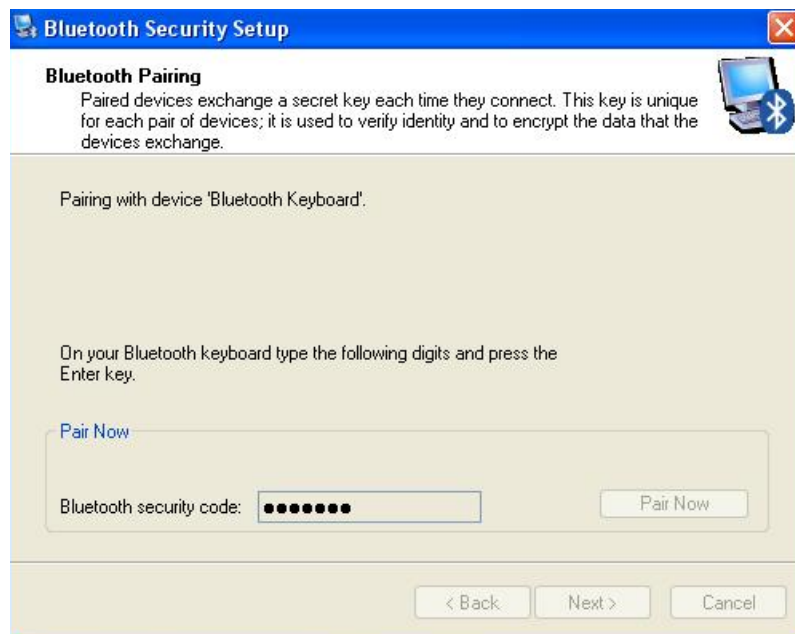
- **Next Pairing Steps**

- A. Steps for matching WIDCOMM**

- 1) .Double click the BTW icon in toolbar, select “Bluetooth” and click "search for devices"



- 2) . On **Bluetooth Keyboard** type the stochastic match code and press the Enter key

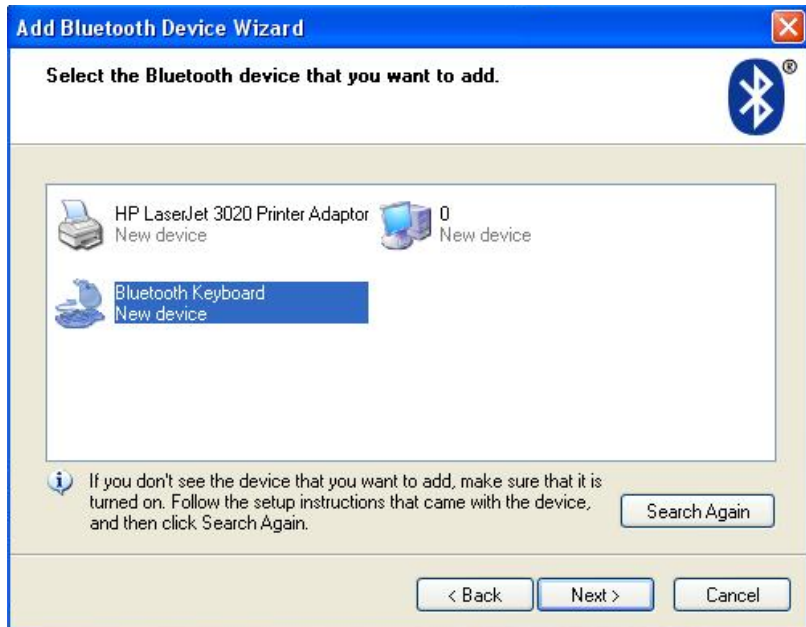


B. Steps for matching on Microsoft built-in software

- 1) . Click Start menu, click Control Panel and double click “Bluetooth Devices”., On the “Devices” tab, click “Add”.



2) . Select "My device is set up and ready to be found", when find the Bluetooth Keyboard, you can select it and click "next"

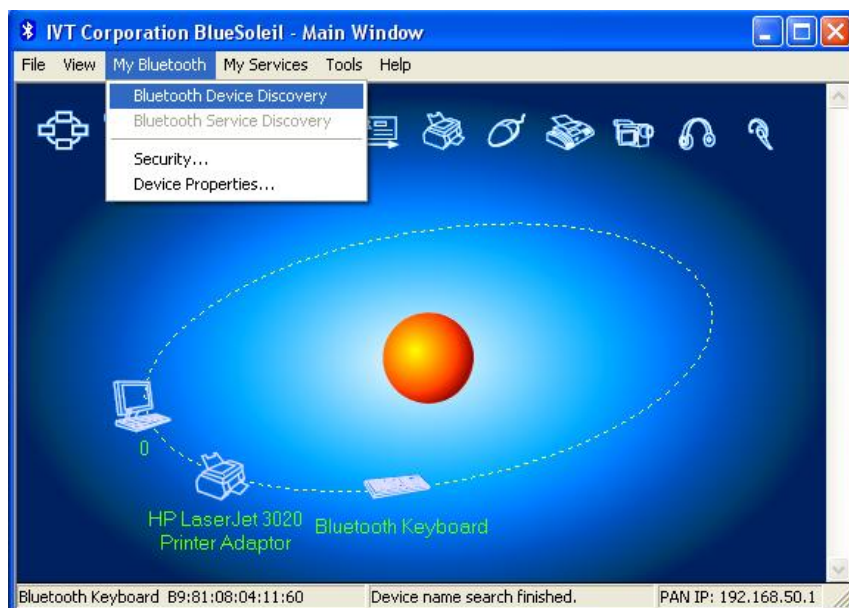


- 3) . Select "Don't use passkey", and click "next", operating system will finish the installation of the new facility automatically.

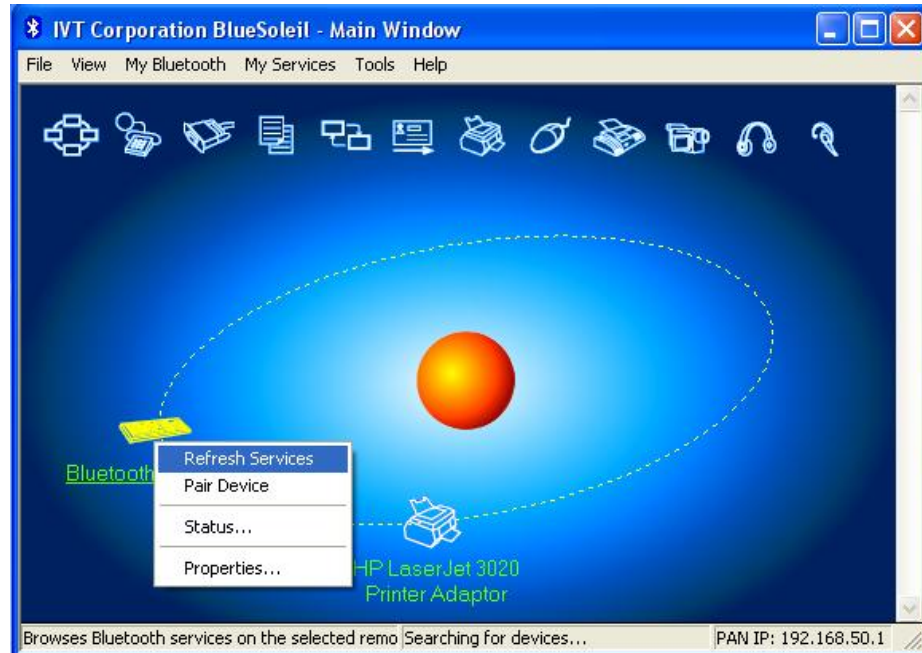


C.Steps for matching on IVT Bluecoleil

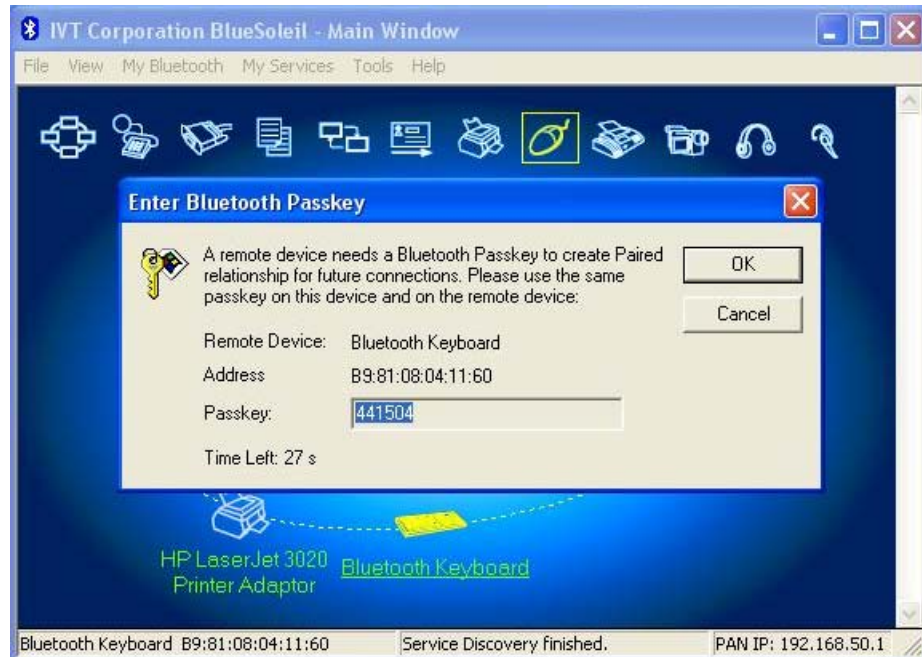
- 1) .Make sure the bluetooth function have been activated on the computer system, double click the bluetooth icon in toolbar, then click "Bluetooth Device Discovery" under "My Bluetooth" in toolbar.



- 2) . Select the found bluetooth keyboard device, press the right button and select "Refresh Services"



- 3) . Then select the Bluetooth Keyboard icon, press right button to select "Connect" and click "Bluetooth Human Interface Device Service", On **Bluetooth Keyboard** type the stochastic match code and press the Enter key



Product Specifications

- Bluetooth Specification: Version 2.0 Class 2
- Range of Frequency: 2.4GHz Spectrum
- Operating Voltage: 3.7Vdc (powered by Li-ion)
- Operation Current: < 3mA
- Standby Current: 1.0mA
- Sleep Current: < 0.2 mA
- Transmit Range: up to 10 meters
- Storage Temperature: -40 ~ +125 degree
- Dimensions: 115mm x 60.6mm x 8.5 mm
- Weight: 50.5g+/-2g

Troubleshooting

If you are unable to connect your Bluetooth Keyboard to the computer, or the keyboard work unconventionally, please try the following:

- Before you install your Bluetooth Keyboard, please make sure you have done the Bluetooth Dongle installation procedure, and Bluetooth facility is turned on.
- Ensure Bluetooth Keyboard has been paired to PC completely. (The system may require pairing again after restart PC If use low battery to pair)
- Ensure the Bluetooth Keyboard is within a 10 meters range of your PC
- Ensure your bluetooth device of PC have not be changed.(you have to re-connect if changed)
- If your PC bluetooth facility is connected to other bluetooth device, please kindly confirm that the speed of the Bluetooth facility is enough.

Federal Communication Commission Interference Statement

This device complies with Part 15 of the FCC Rules. Operation is subject to the following two conditions:

1. This device may not cause harmful interference.
2. This device must accept any interference received., including interference that may cause undesired operation.

Caution: Changes or modifications not expressly approved by the party responsible for compliance could void the user's authority to operate the equipment.