

TOP10 TV3 User's Manual

1 About This Guide

This guide describes the installation and basic usage of the TOP10 TV3. This guide will help you get started in using these products. If you require further information or troubleshooting information, please refer to the TOP10 TV3 User's Guide, which is available on the software CD and may also be installed on your PC hard disk.

2 About TOP10 TV3

TV Tuner TOP10 TV3 are new technology and high performance TV tuner cards. You can watch/record TV programs on your PC, edit image/video files, or optional remote the PC, and most important of all, do "scheduled " then watching or recording.

"Schedule " is one of the most important optional features from other PCI TV Tuner cards in the TOP10 TV3 serious. By activating the function, TOP10 TV3 will turn on your PC and record the assigned programs. When recording process is finished, TOP10 TV3 can automatically shut down your PC when finish. You can even setup up the TOP10 TV3 to record a whole week or month your favorite TV program and then turn off your PC everyday.

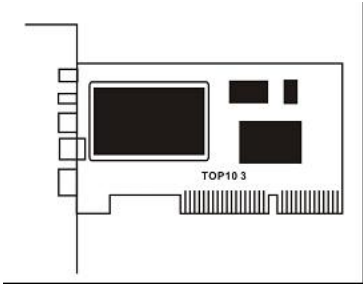
3 Minimum System Requirements

- 400 MHz Pentium II or equivalent CPU and 128 MB RAM
- Sound Blaster or equivalent sound card
- One PCI slot
- CD-ROM drive for software installation
- Windows XP, 2000 or 98SE
- 10 MB free disk space for basic software installation

Recommended System Requirements

- 1.7 GHz Pentium 4 or equivalent CPU and 256 MB RAM
- Sound Blaster or equivalent sound card
- One PCI slot
- CD-ROM for software installation
- Windows XP with DirectX 9.0 installed
- 30 MB free space for software installation
- 600 MB to 3 GB per hour of recorded video

TOP10 TV3 Contents



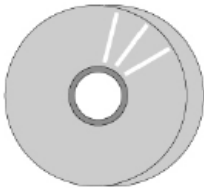
TOP10 TV3 Card



IR Receiver



Remote Control



Software CD

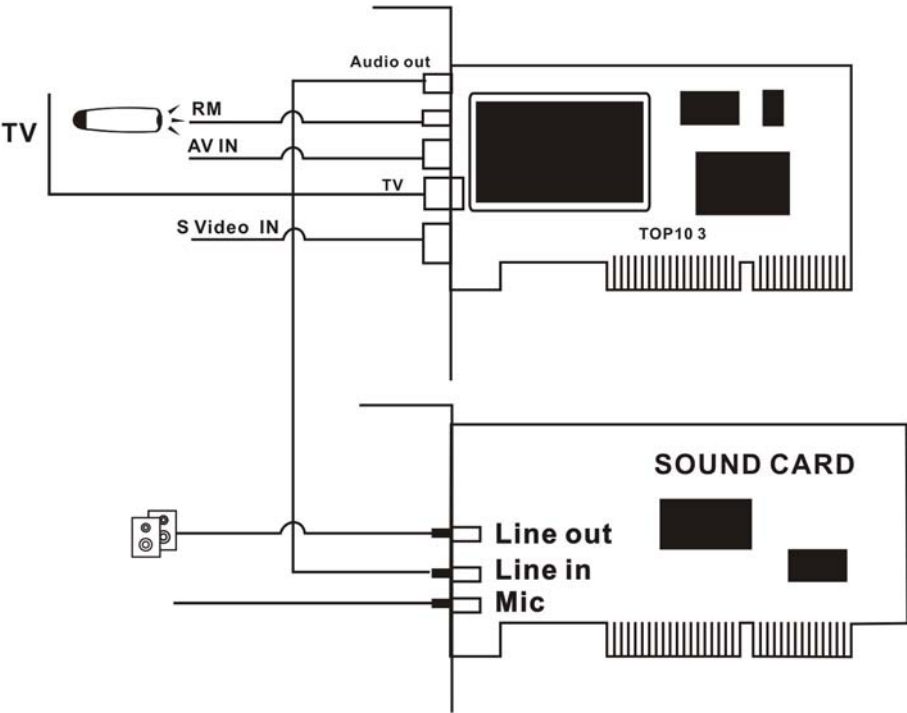


External Audio cable



Battery

4 TOP10 TV3 Card Connectors



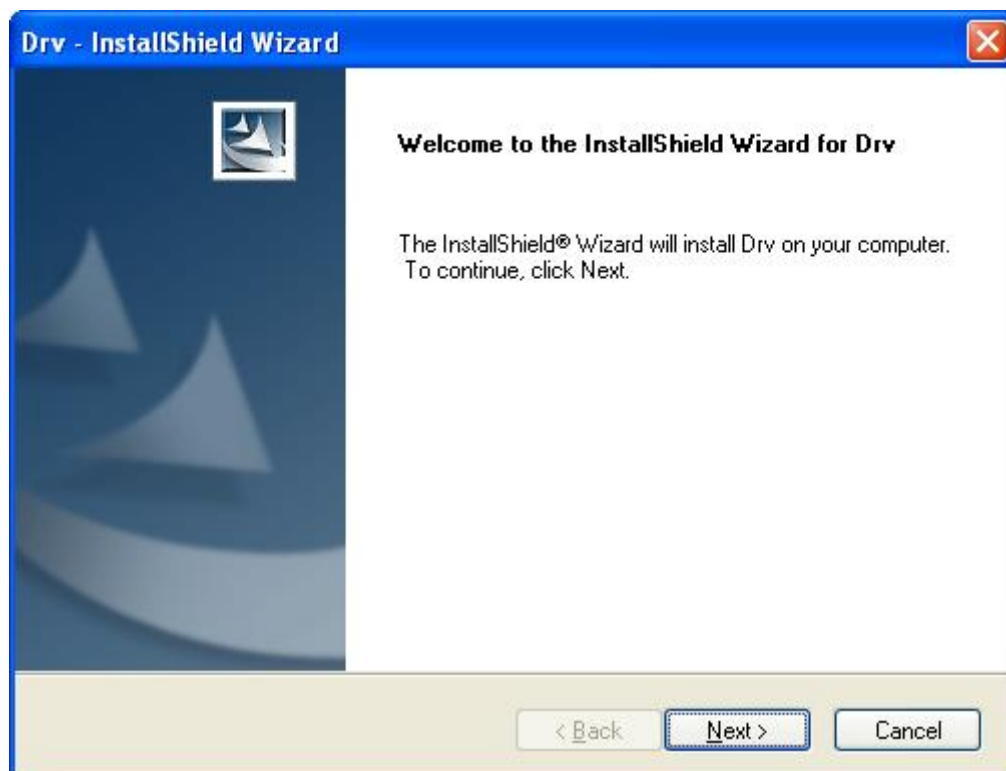
5 Driver and Software Installation

Driver Installation:

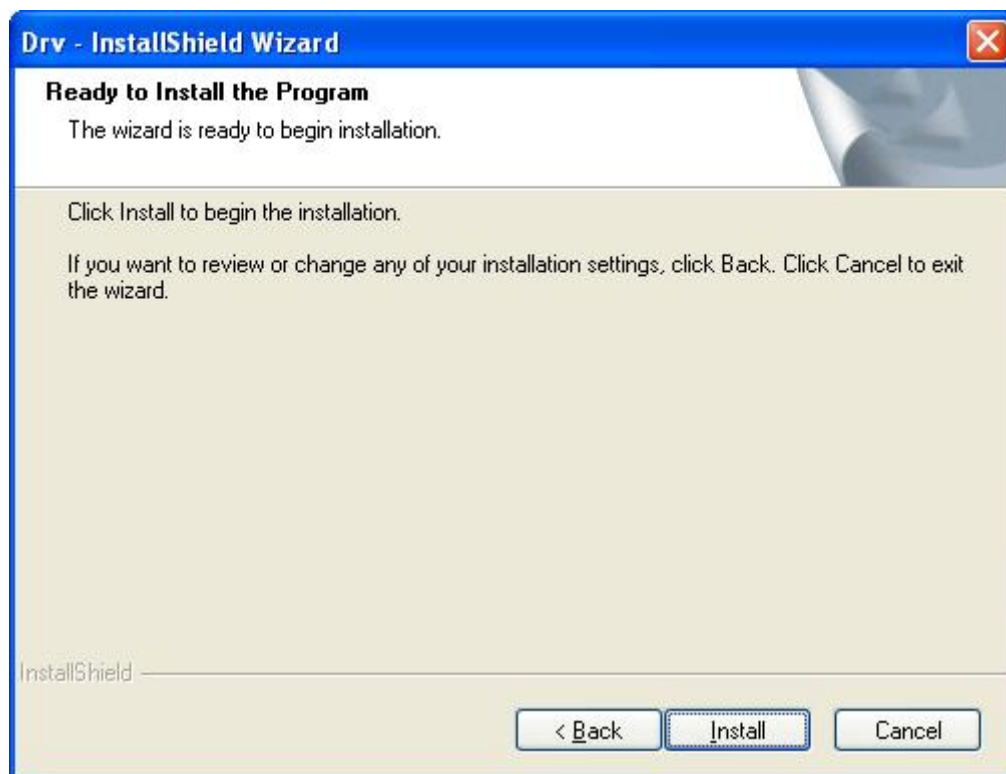
Step1: Insert the driver CD into CDRom, browse the CD, Click "Driver Install" or run Driver\Setup.exe, then press "next" to continue.



Step2: Click "next" to continue installation



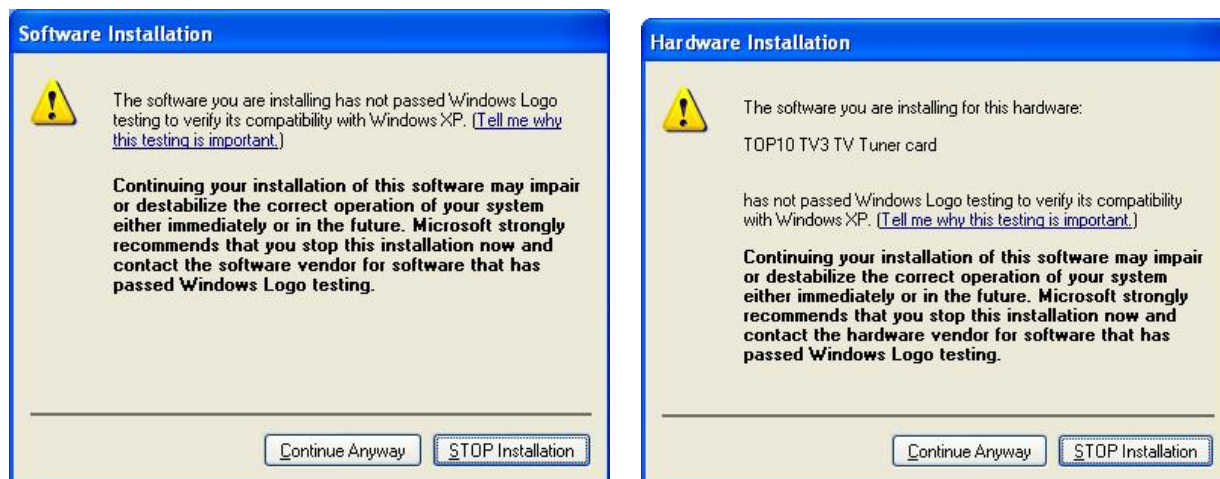
Step3: Click “Install” to continue installation driver



Step4: Installing TOP10 TV3 Video Capture, Click “Continue Anyway”



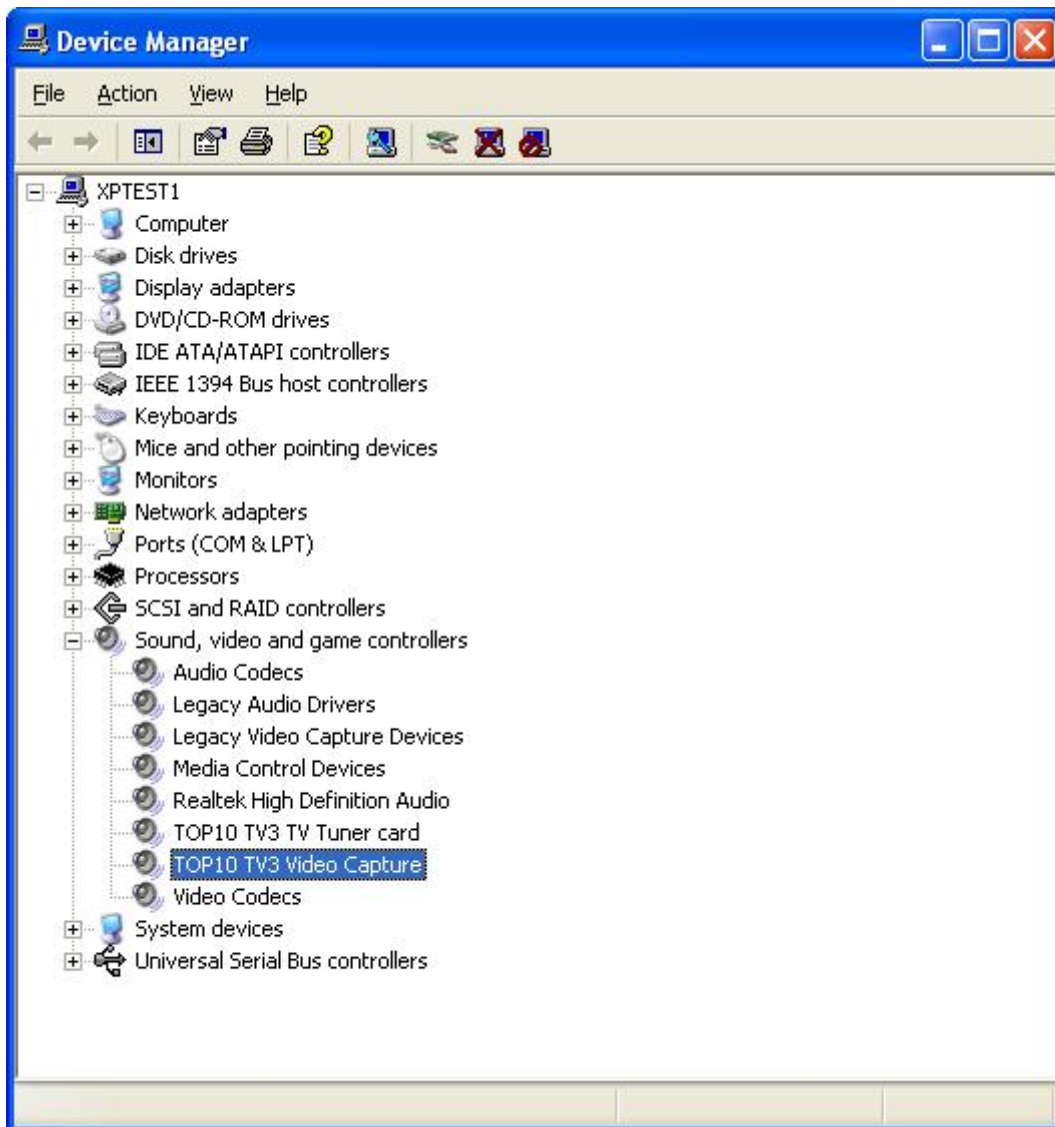
Step5: Installing TOP10 TV3 TV Tuner card, Click “Continue Anyway”



Step6: When all finished , please check on open the control panel , select “**System**”, select“**system properties**” , select “**Device Manager**” , you can see four new device drivers installed.

TOP10 TV3 Video Capture

TOP10 TV3 TV Tuner card

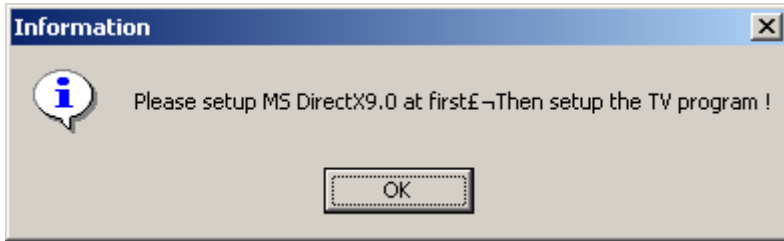


Software Installation

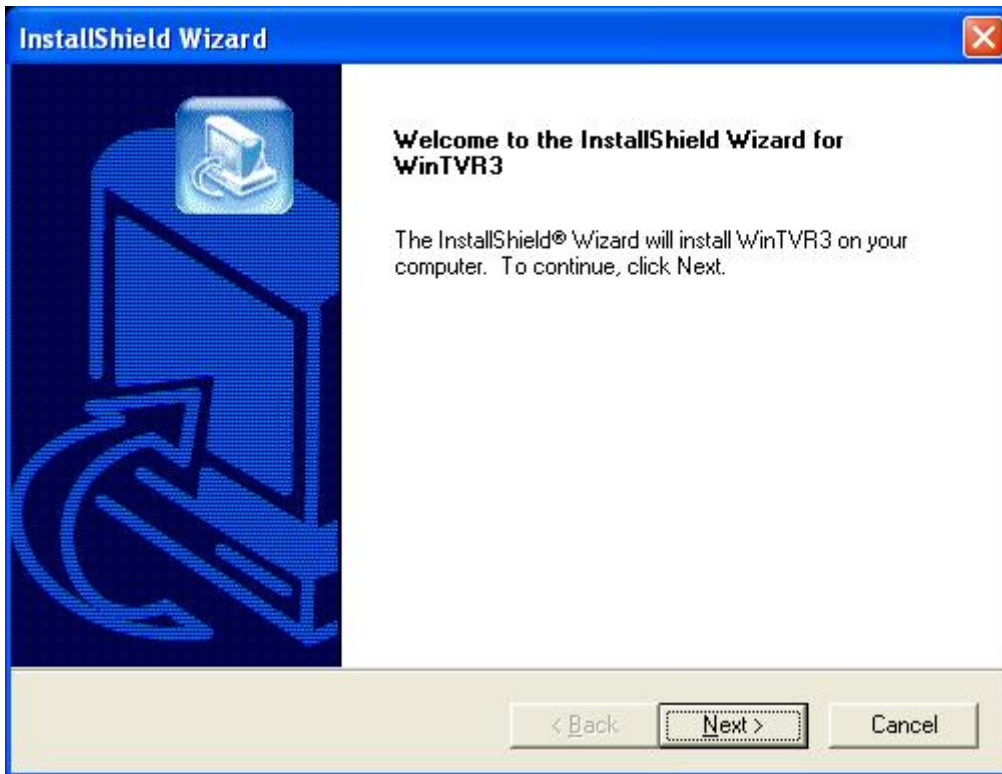
Step 7: You can choose your prefer language, there are two option (China and English)



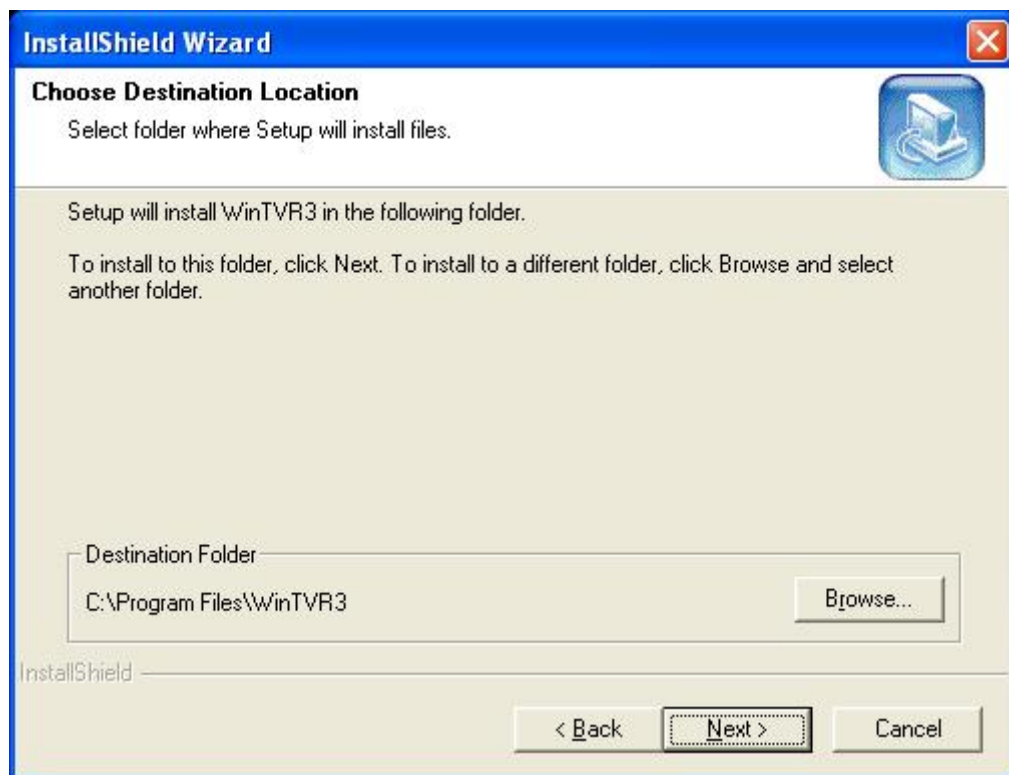
Step 8: If u have not install DirectX9.0, OS will install DirectX9.0 automatically



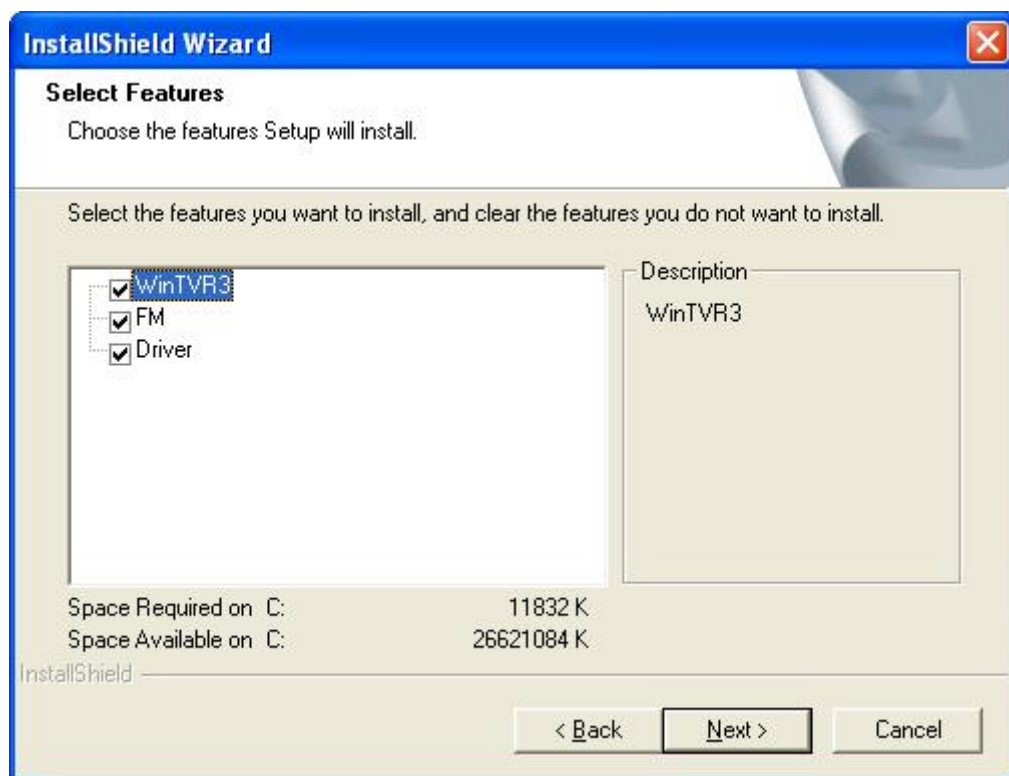
Step 9: After DirectX9.0 installation finished, After installation the component, click “Next” to continue install “WinTVR3”



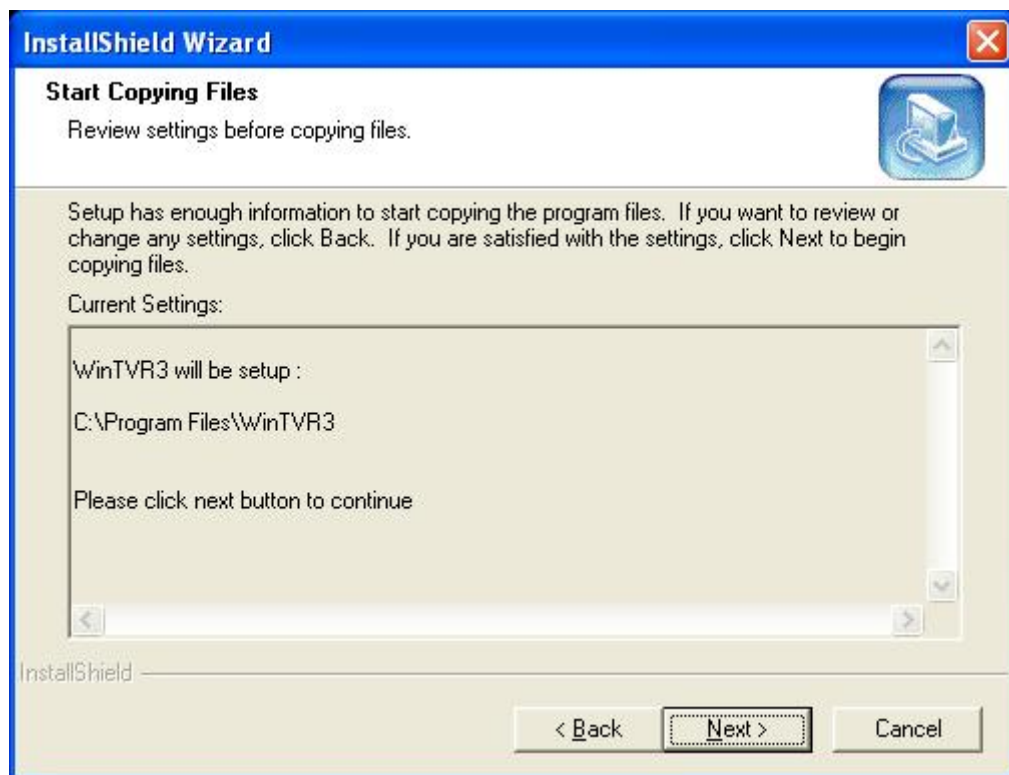
Step 10: Select which directory to install, just choose browse, or click “next” to select the default directory;



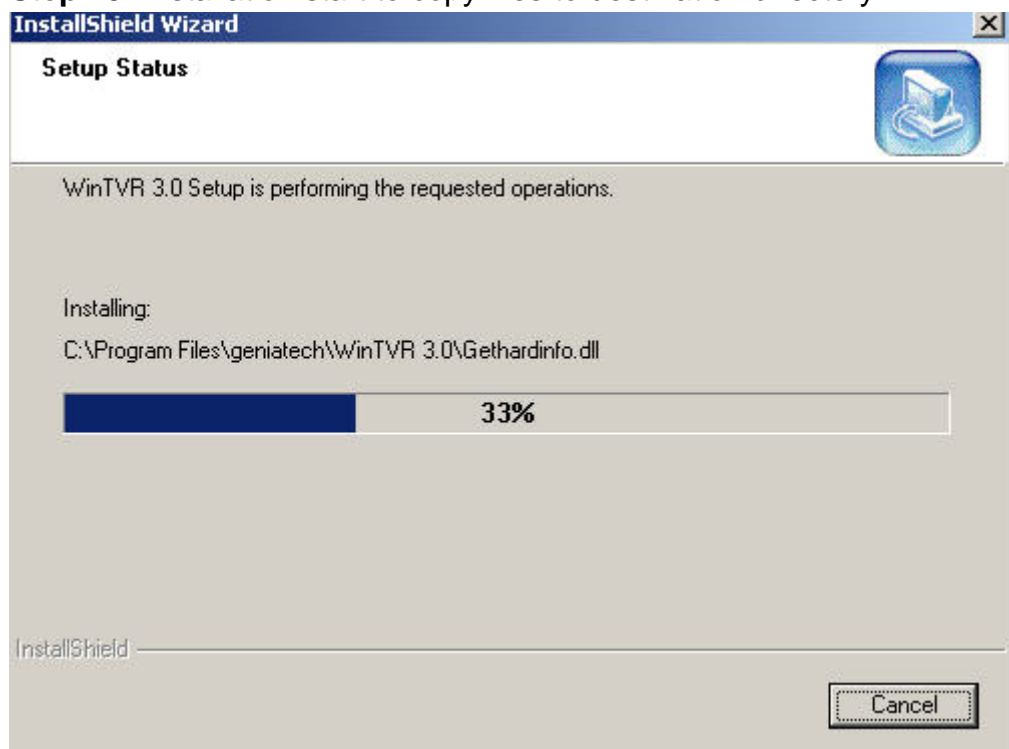
Step 11: Choose install the components, and click “Next”.



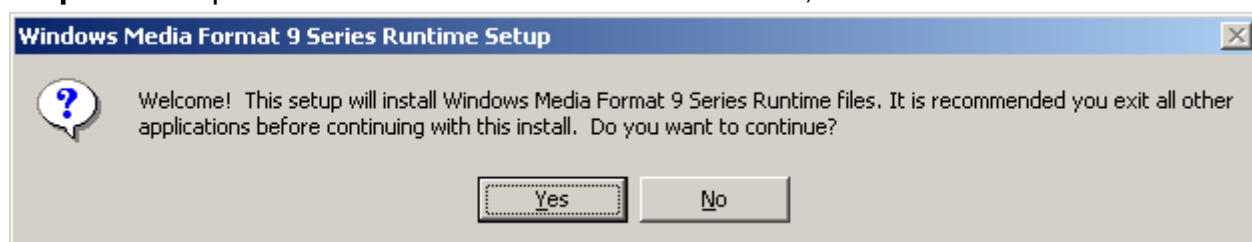
Step 12: Click “Next” to install WinTVR3..



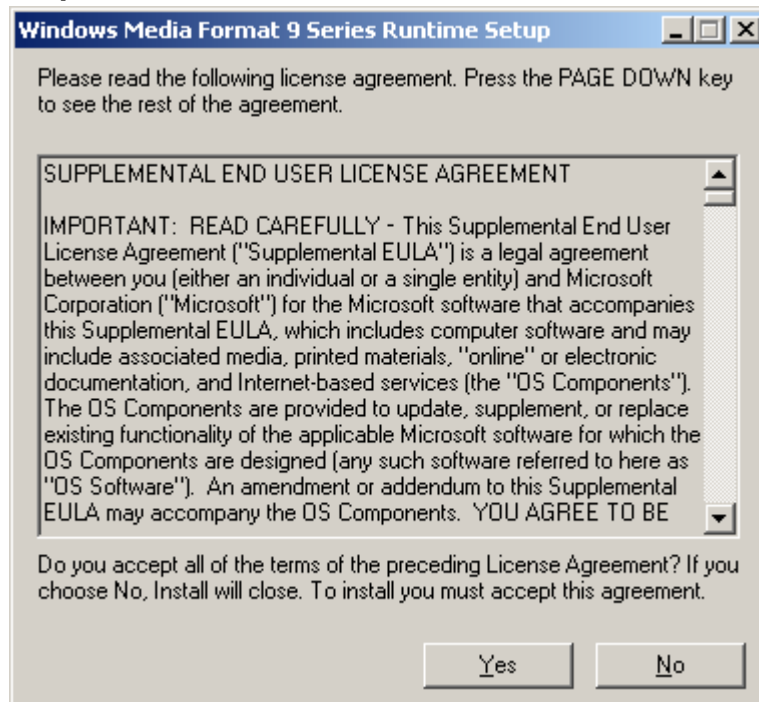
Step 13: Installation start to copy files to destination directory



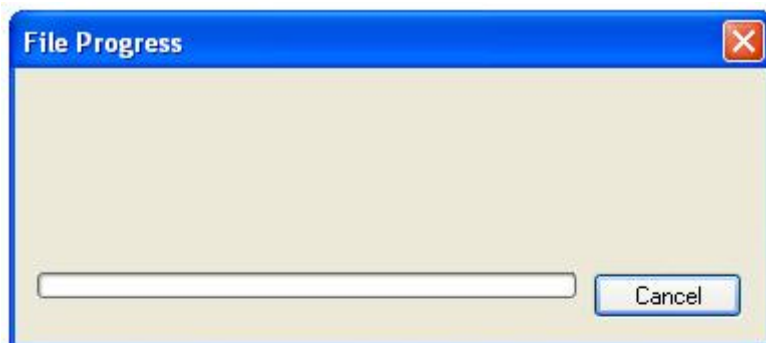
Step 14: Auto promote install "Windows Media Format9", and click "Yes".



Step 15: Click “Yes” to continue “Windows Media Format9” installation.



Step 16: Install MPEG4 plugs, Click “Continue Anyway” (Only Windows XP)



Step 17: System will prompt that system will restart, please click “Finish”.



Step 18: There are the ICONS.



6 WinTVR User

6.1 Introduction

WINTVR is a full function PC TV tuner display software, it let you watch TV on full screen or TV in a window, and record the TV program while watching or on specified time. With the IR remote control handset, you can control volume up and down, channel up and down, and even power off your PC by remote handset.

You can direct record your video from VCR, DVD play and Camcorder into Mpeg1/2/4 files, or snapshot the video into picture files.

WINTVR has a deluxe user interface, easy to use, with the support of your hardware, it can supports FM radio listening and MP3 recording.

6.2 Features:

- Easy to install, user friendly interface, easy to use
- Full function TV watching
- Schedule TV recording
- Full function IR remote control
- Full channel scan and fine tuning
- Support AV and S-video input
- Real time recording Mpeg1/2/4 video and audio files, MP3 audio files.
- World wide standard support (depends on the hardware)

6.3 Functions:

- Schedule recording: By weekly, daily, monthly, you can set watch and/or recording specified channel at specified time;
- Multi-channel preview: You can preview up to 16 channel at one time
- Snapshot: Can snapshot the TV program.
- Window scaling: Can change between the full screen and in one window
- Video desktop: Can put the video to be the background of the desktop

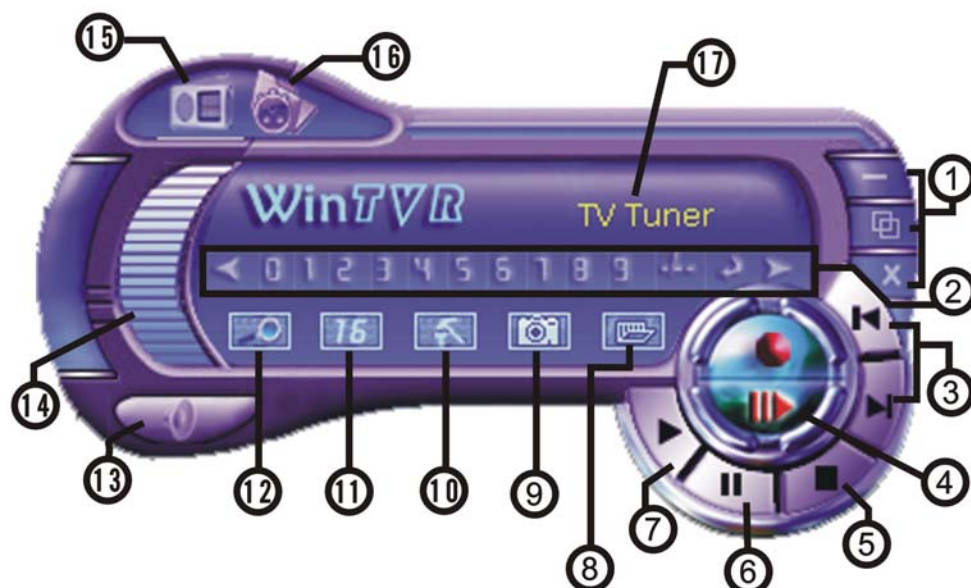
6.4 Installation

When you insert the WinTVR CD into your CDROM, it will automatically run setup, if not, please browse the CD, and select “WINTVR \setup.exe”, and double click, can start setup.

6.5 Uninstall

You can choose “Add/Remove software” in control panel, and select “UninstallWinTVR” to uninstallWinTVR.

7 WinTVR User Interface



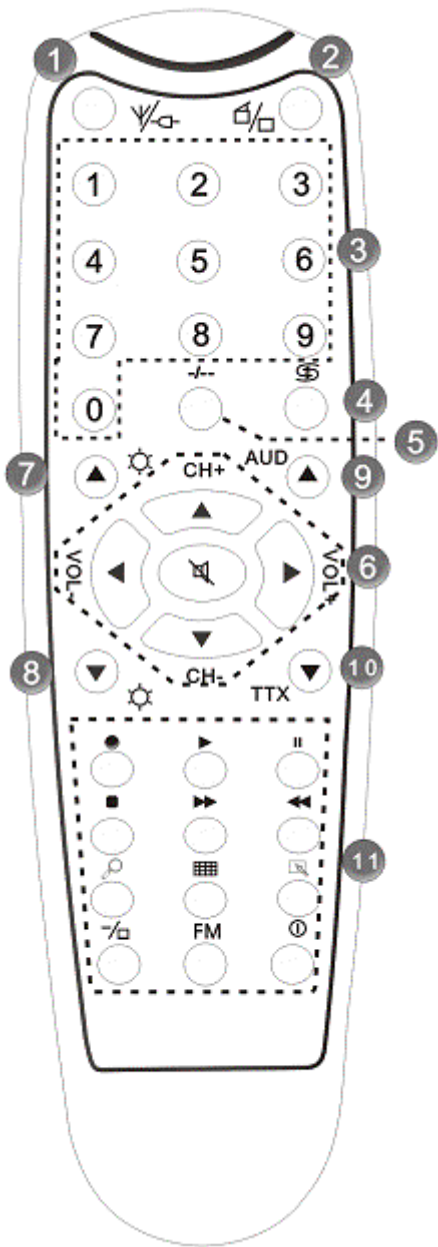
NO	Description	NO	Description
1	Minimize/Full Screen/Close	10	Settings
2	Channel Selection Keypad	11	16 Channel Preview
3	Step Backward/Step Forward	12	Auto Scan TV Channels
4	Record/Time-Shifting	13	Mute
5	Stop	14	Volume Control
6	Pause	15	Switch to FM
7	Play	16	Recording Schedule
8	Open Movie Clip	17	Current Status
9	Take a Snapshot		

Note: The function with * not suitable for this product

8 IR Remote Handset

Remote control handset

Key NO	Description
1	Switch input source: Switch from TV, Composite video and S-Video
2	Turn On/Off TOP10 TV3application software
3	Digital Keys
4	Return to previous channel
5	Single/double/triple digit
6	CH+. CH-; Channel Up/Down VOL+. VOL-; Volume Up/Down Mute
7	Brightness up
8	Brightness down
9	AUD: Stereo/Mono
10	TTX; Teltext
11	Record: Record/stop Play: Play recorded files Pause Stop/record Fast forward Back forward Auto scan channel Snapshot Setup menu Full screen window and video desktop switch FM: Power on/off: Exit WinTVR3



Note

More function IR Remote can not use on other devices , VCD or Satellite decoder device.